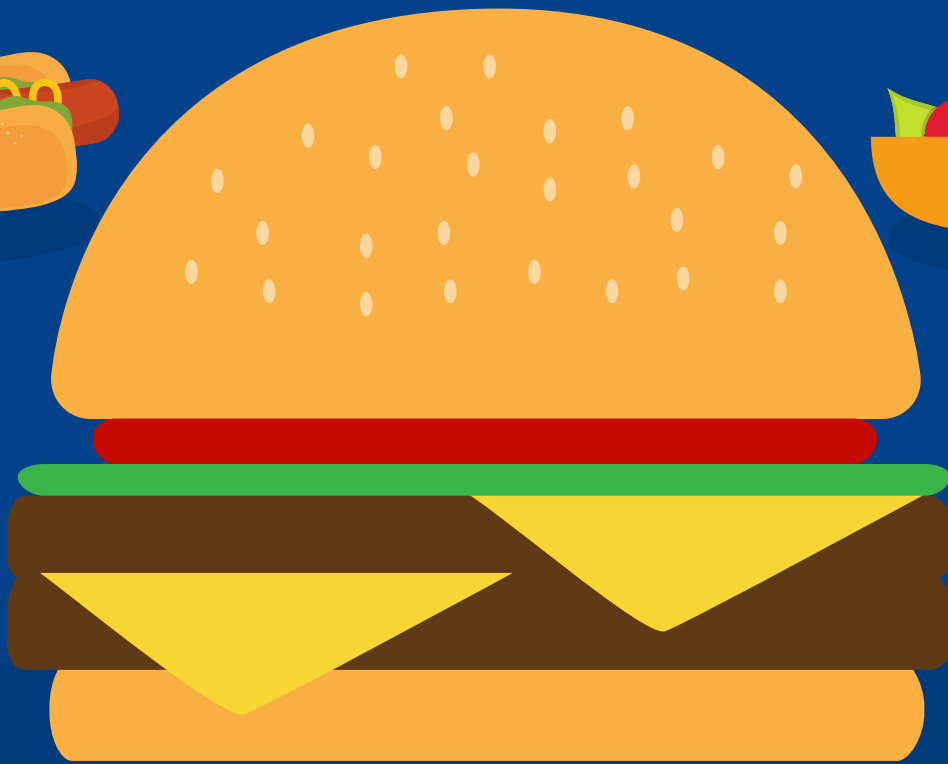
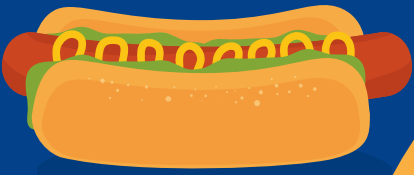


EVOLUTION OF
FOOD

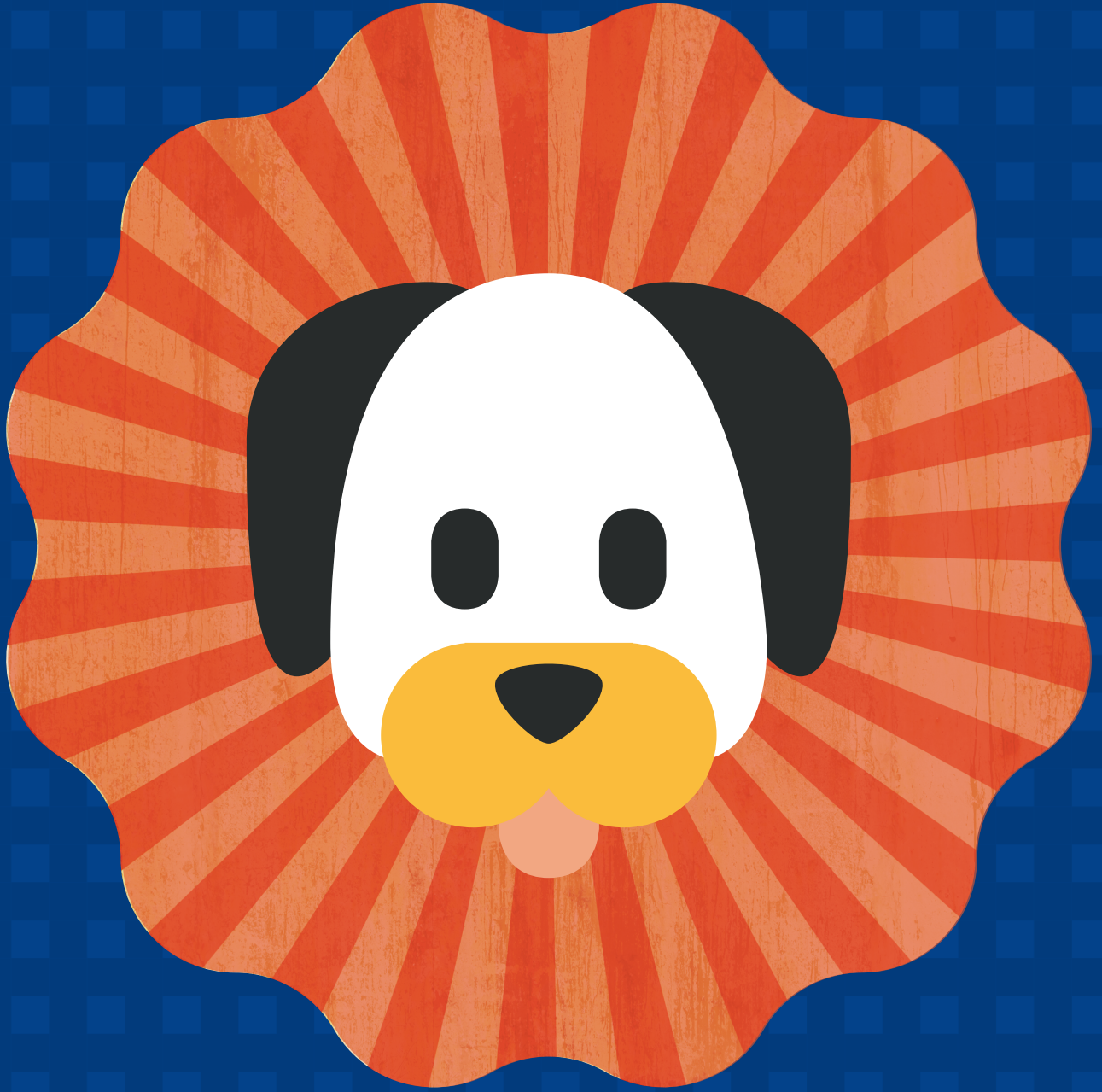


AN
**ARCHAEOLOGY
MYSTERY**




NCSE National Center for
Science Education

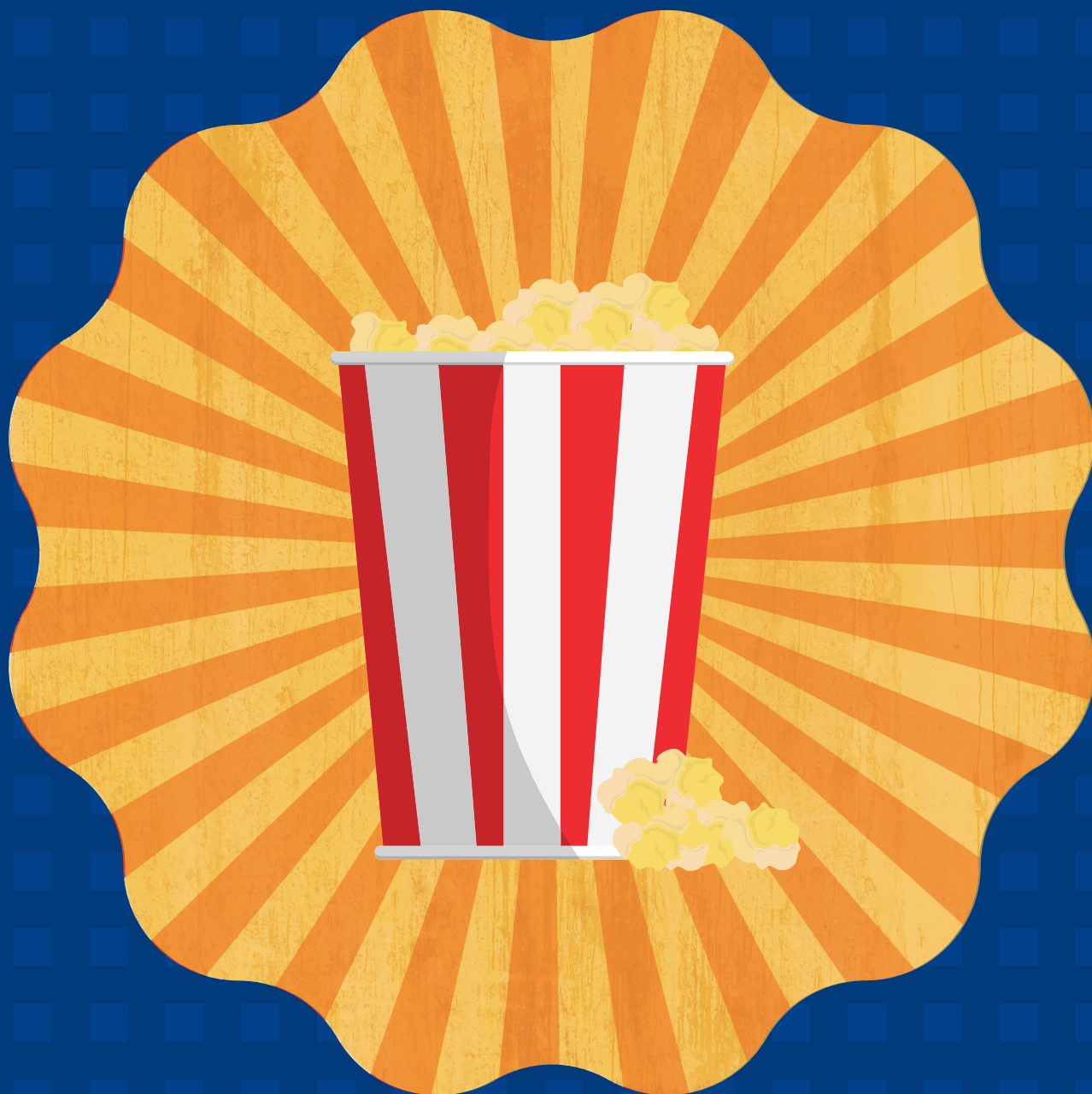
W A T C H



WOLVES CHANGE INTO DOGS
BEFORE YOUR EYES!

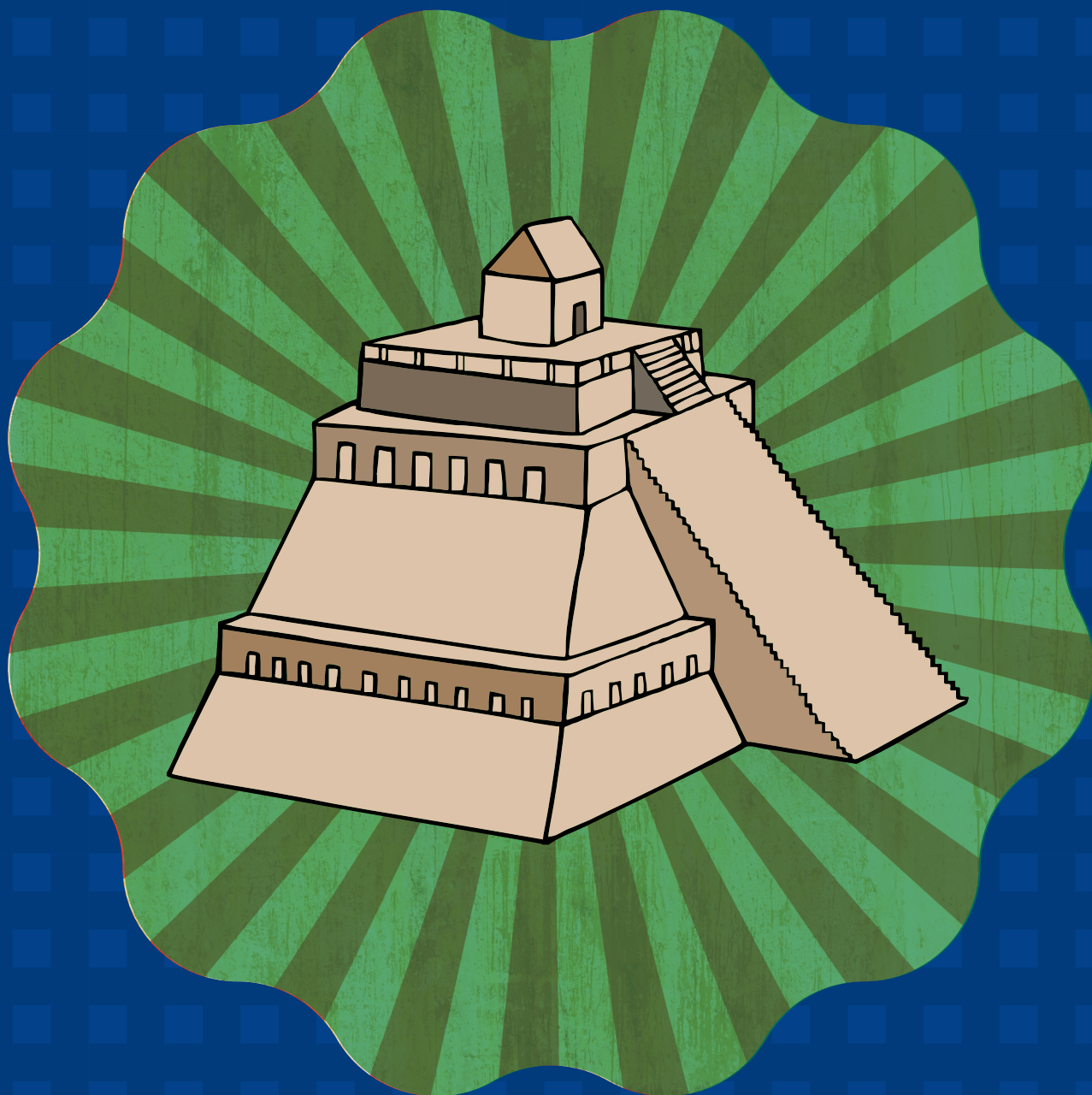


TASTE



**ANCIENT FOOD THAT
PREDATES DOMESTICATION!**

EXPLORE

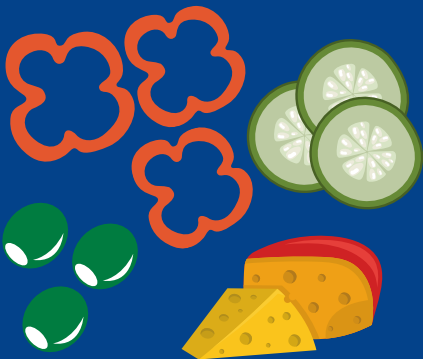


**OUR ARCHAEOLOGICAL
TEST PIT!**

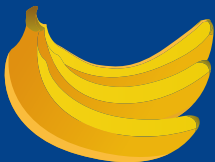
EVOLUTION OF
FOOD



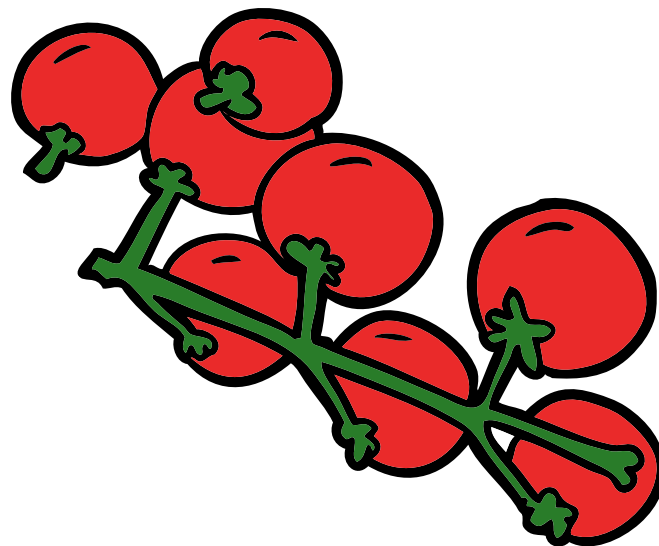
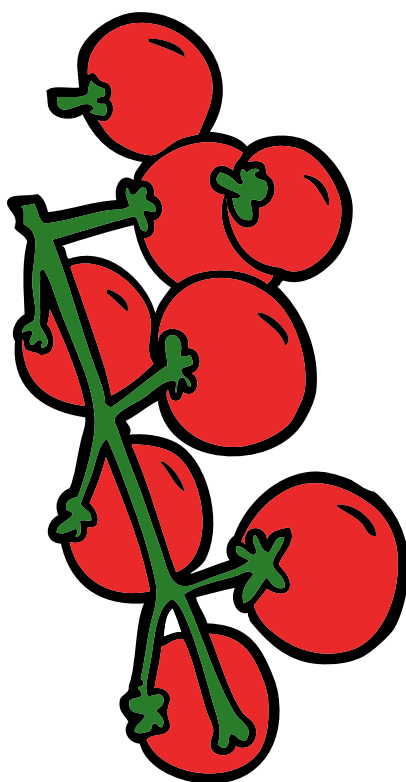
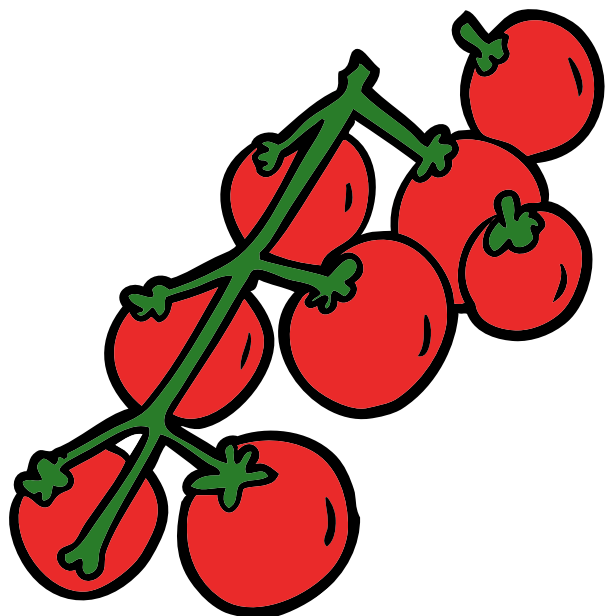
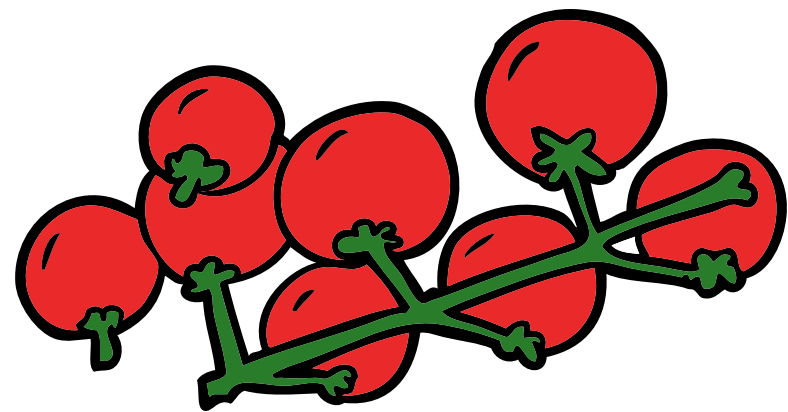
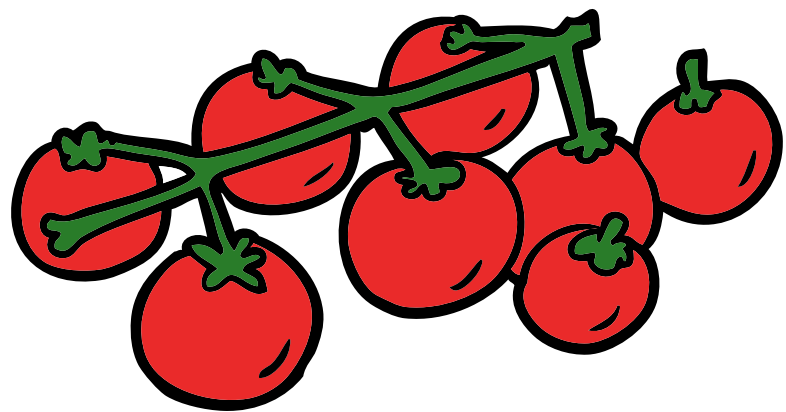
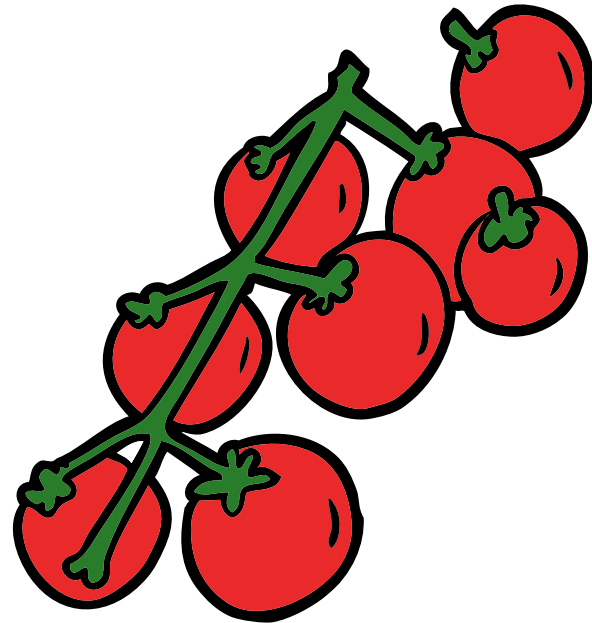
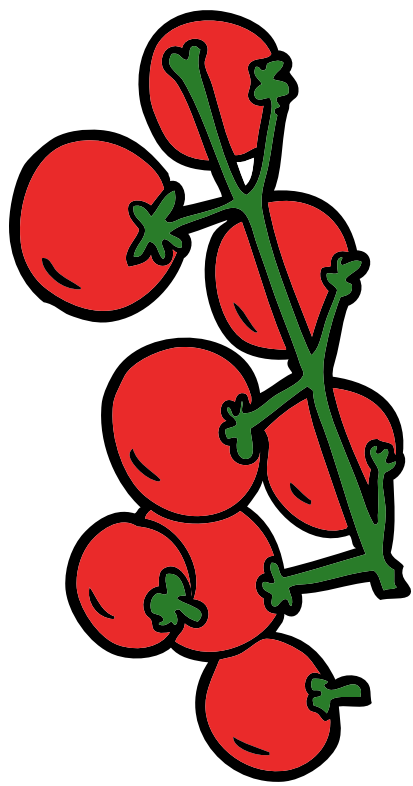
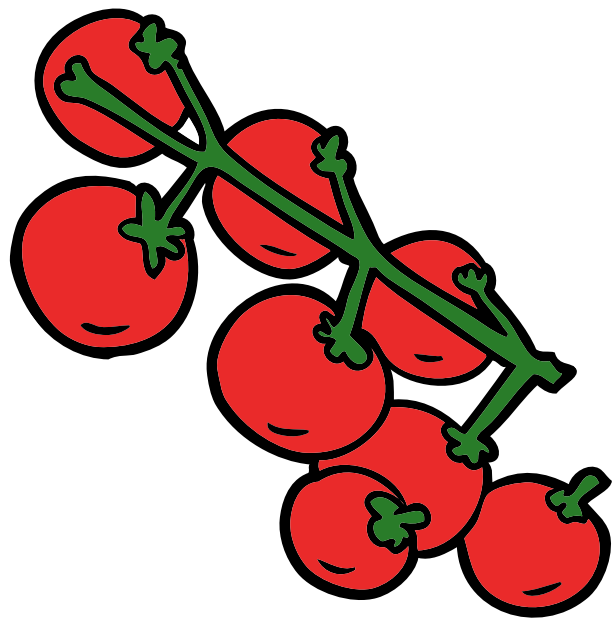
EVOLUTION OF
FOOD

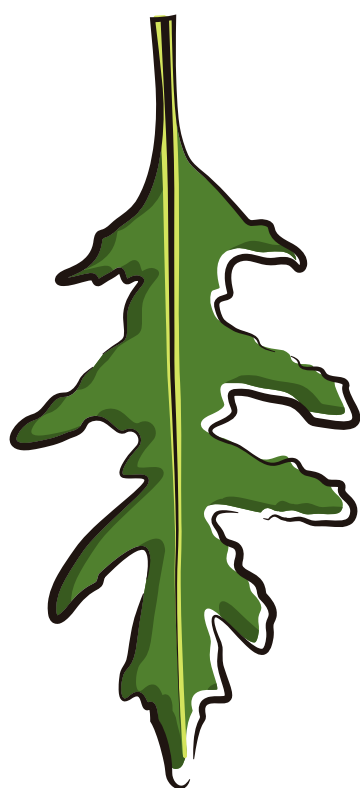
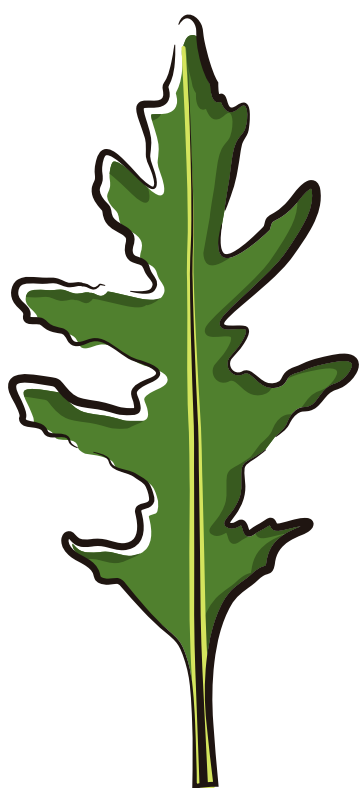


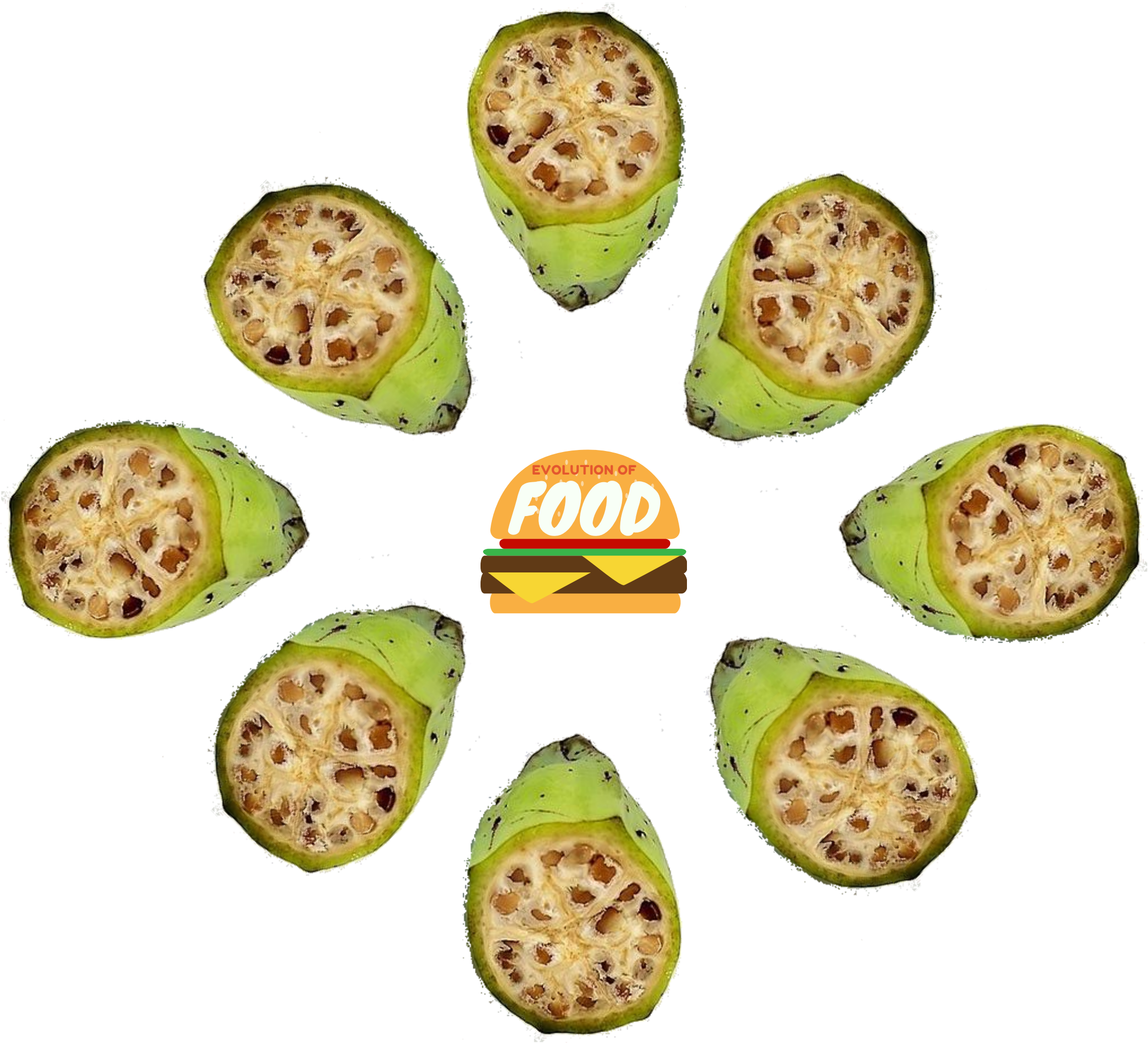
EVOLUTION OF
FOOD



























Female wolf



Scenario: You are an early human. Near your camp you find a female wolf that has recently given birth to a litter of pups. You decide to take one back to camp with you.

Which pup do you choose to take with you?



Wolf Pup A



Wolf Pup A

This pup will not eat food when humans are nearby.

Choose scenario A-1 or A-2



Wolf Pup B



Wolf Pup B

This pup will eat food when humans are nearby.

Choose scenario B-1 or B-2



Scenario A-1



Result A-1: You take the wolf pup back to your camp and leash it up outside your home in the hopes it will become more tolerant of humans. You leave to attend to other business, but when you return the young wolf pup has escaped and is nowhere to be found.



Scenario A-2



Scenario A-2: You take the wolf pup back to your camp and leash it up outside and hope it will become more tolerant of humans. You leave to attend other business and when you return you notice the wolf pup has escaped. You either...



Search inside your house



Search the nearby pasture



Result:

You rush inside your home and find out that the wolf pup has attacked and severely injured your children!



Result:

You rush outside to the nearby pasture and find out that the wolf pup has eaten your entire flock of sheep!



Scenario B-1

When you approach the wolf pup it...



Choose one:

Follows you as you walk through the camp.

Tries to play with you when you approach it.

As a result of the wolf's friendly behavior, you begin to trust each other.

Choose either Scenario C-3 or C-4

As a result of the wolf's friendly behavior, you begin to trust each other.

Choose either Scenario C-3 or C-4



Scenario B-2

When you approach the wolf pup it...



Choose one:



Wags its' tail.



Tries to lick your hand.



As a result of the wolf's friendly behavior, you begin to trust each other.

Choose either Scenario C-3 or C-4



As a result of the wolf's friendly behavior, you begin to trust each other.

Choose either Scenario C-3 or C-4



Scenario C-3

You and your wolf-dog venture into a nearby forest. There is a noise nearby. Your companion is most likely to...



Choose one:

- A. run away from the noise.
- B. growl.
- C. run toward the noise.
- D. begin scenting the air and ground.



Scenario C-4

You and your wolf-dog venture into a nearby forest. There is a noise nearby. Your companion is most likely to...



Choose one:

- A. run away from the noise.
- B. growl.
- C. run toward the noise.
- D. begin scenting the air and ground.

Scenario A:

The noise you heard was a thunderclap overhead and your wolf-dog sprints away, but this gives you an idea. You decide to harness your canine's speed and stamina and attach them to a sled. This allows you to more efficiently move from one place to another.



Congratulations! You have domesticated your wolf into an Alaskan Malamute.

Scenario B:

The rustling noise moves towards you and gets louder. Your wolf-dog begins to aggressively bark to scare away the potential threat. After a minute, all is quiet and the threat has passed.



Congratulations! You have domesticated your wolf into a German Shepherd.



Scenario C:

Your wolf-dog takes off through the brush, leading you to a small lake covered with reeds and aquatic plants. Your wolf-dog jumps into the water in an attempt to catch and retrieve a duck hidden in the foliage.



Congratulations! You have domesticated your wolf into a Golden Retriever.

Scenario D:

Your wolf-dog follows the scent through the forest brush and begins to bay, telling you it has found a deer that you can catch eat for dinner.



Congratulations! You have domesticated your wolf into a Bloodhound.